



by Nailor Industries, Inc.

FILTER HOUSINGS

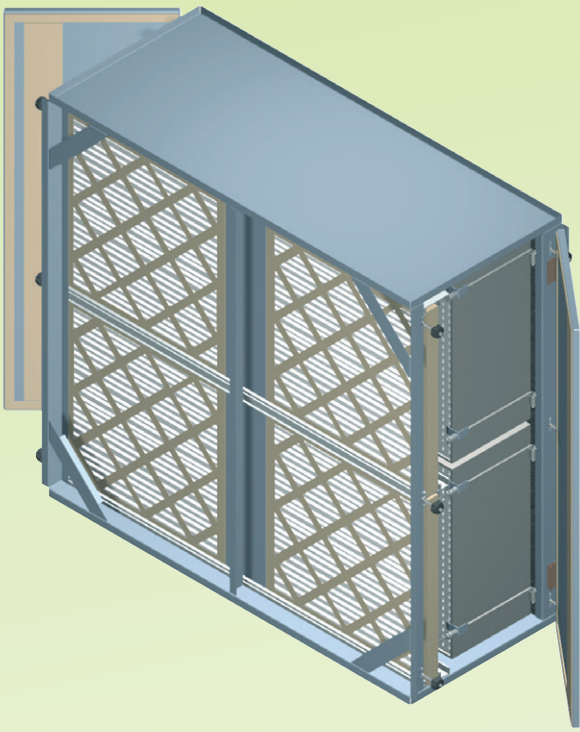
KLEAN AIRE

1902 Rankin Road, Houston, TX 77073 • 281-590-1172

Website: thermal-corp.com/products/klean-aire-product

Email: KleanAire@Nailor.com





HEPA Filter Housing Bolt Model HFHB

2 STAGES OF FILTRATION PRE-FILTER/HEPA/SWING BOLT

SIZE: 5 depths will accommodate 6" or 12" HEPA filters with or without 2" or 4" pre-filters.

CONSTRUCTION: 14 ga. galvanized steel with integrated 1" mounting flanges, turned outward, located on inlet and discharge.

FILTER TRACK:

PRE: Type 6063 extruded aluminum.
HEPA: Frame .065" wall structural steel tubing, seam welded, ground, epoxy coated.

CLAMPING: Four positive pressure, swing arm, spring loaded clamping mechanisms are used per filter to provide a positive sealing integrity.

DOORS: Compression-tight, bolt-down doors with stainless steel slip hinges.

OPTIONS:

- 304SS construction.
- 316SS construction.
- Gel seal HEPA frame.
- Type 5052 aluminum construction.
- Insulated housing.
- Double wall insulated door.
- High temperature construction.
- +/- high pressure construction.
- Custom housing sizes.
- Custom mounting flange sizes (flanges turned outward or inward).
- Weatherproof construction.
- Epoxy coatings.

HEPA Filter Housing Crank Model HFHC

2 STAGES OF FILTRATION PRE-FILTER/HEPA/CRANK STYLE

SIZE: 5 depths will accommodate 6" or 12" HEPA filters with or without 2" or 4" pre-filters.

CONSTRUCTION: 14 ga. galvanized steel with integrated 1" mounting flanges, turned outward, located on inlet and discharge.

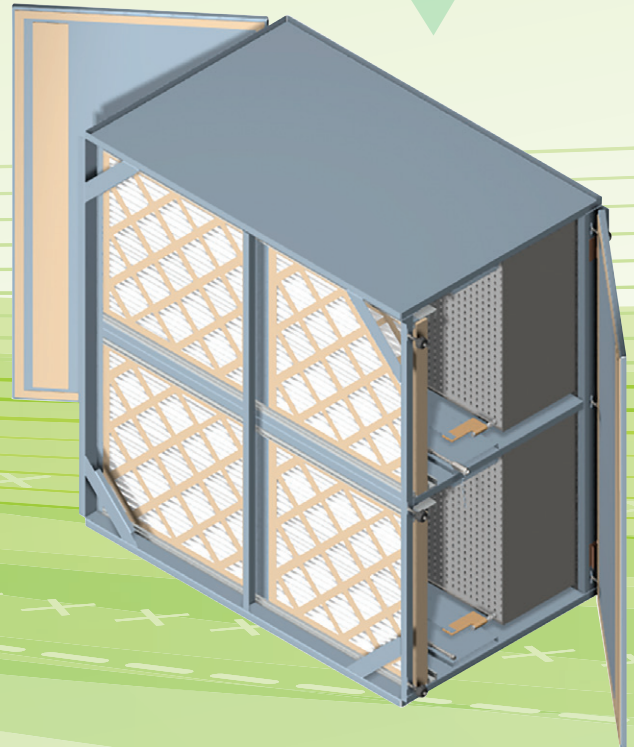
FILTER TRACK:

PRE: .080" Type 6063 extruded aluminum with integral nylon fiber pile seal.

HEPA: Frame .065" wall structural steel tubing, seam welded, ground, epoxy coated.

CLAMPING: A cranking action activates the sealing mechanism. As the crank turns, four spring loaded plungers press each filter against the frame exerting positive pressure on the filters forming a tight seal.

DOORS: Compression-tight, bolt-down doors with stainless steel slip hinges.



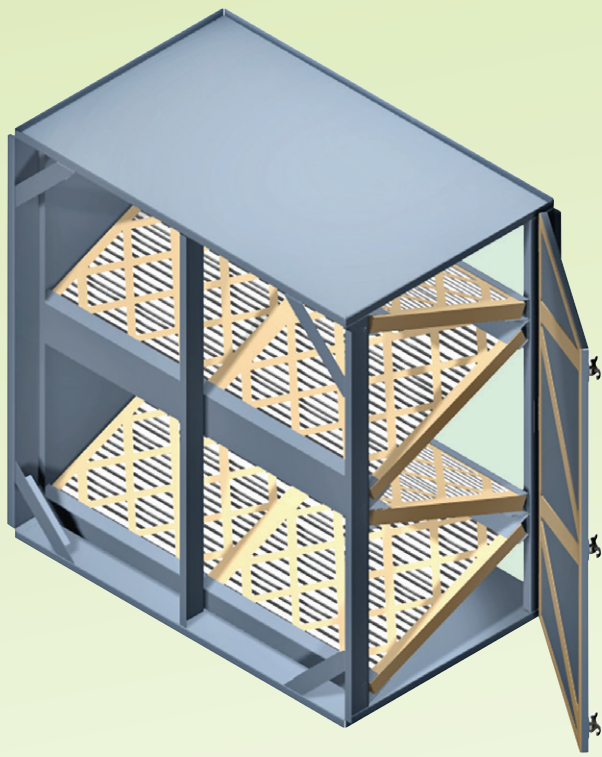
KLEAN AIRE

1902 Rankin Road, Houston, TX 77073 • 281-590-1172

Website: thermal-corp.com/products/klean-aire-products

Email: KleanAire@Nailor.com

FILTER HOUSINGS



Vee Bank Filter Unit Model VBFU

1 STAGE OF FILTRATION PRE-FILTER

SIZE: One depth will accommodate 2" or optional 4" pleated filters in Vee configuration.

CONSTRUCTION: 16 ga. galvanized steel with integrated 1" mounting flanges, turned outward, located on inlet and discharge.

FILTER TRACK: 16 ga. formed galvanized steel track.

OPTIONS:

- 304SS construction.
- 316SS construction.
- Type 5052 aluminum construction.
- Insulated housing.
- Double wall insulated door.
- High temperature construction.
- +/- high pressure construction.
- Custom housing sizes.
- Custom mounting flange sizes (flanges turned outward or inward).
- Weatherproof construction.
- Epoxy coatings.

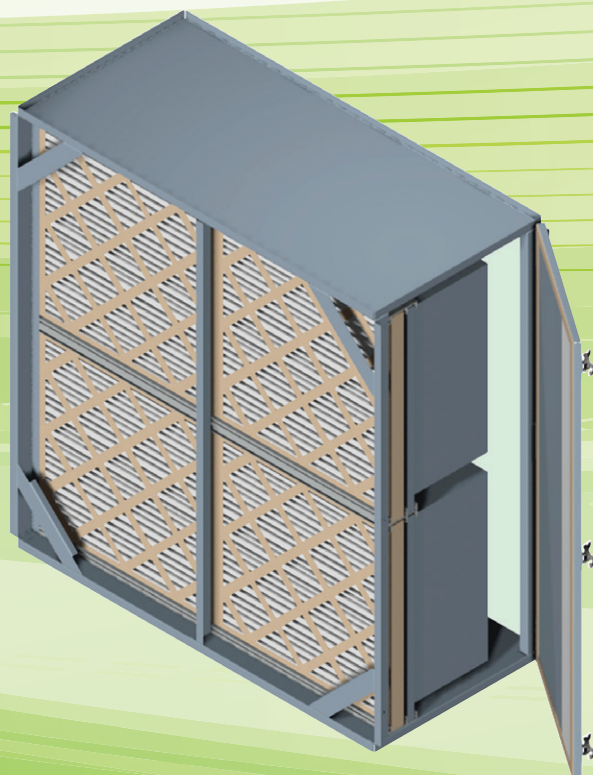
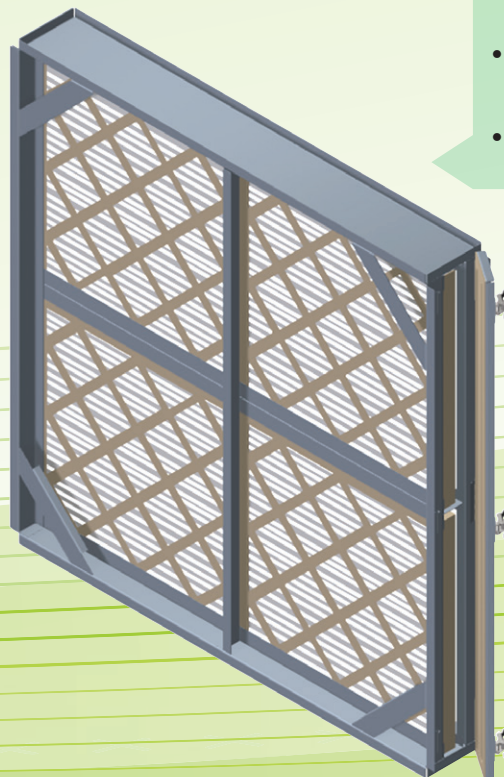
Flat Filter Housing Unit Model FFHU

1 STAGE OF FILTRATION PRE-FILTER

SIZE: Two depths will accommodate pleated filters either 2" or 4".

CONSTRUCTION: 16 ga. galvanized steel with integrated 1" mounting flanges, turned outward, located on inlet and discharge.

FILTER TRACK: 20 ga. galvanized steel formed filter track.



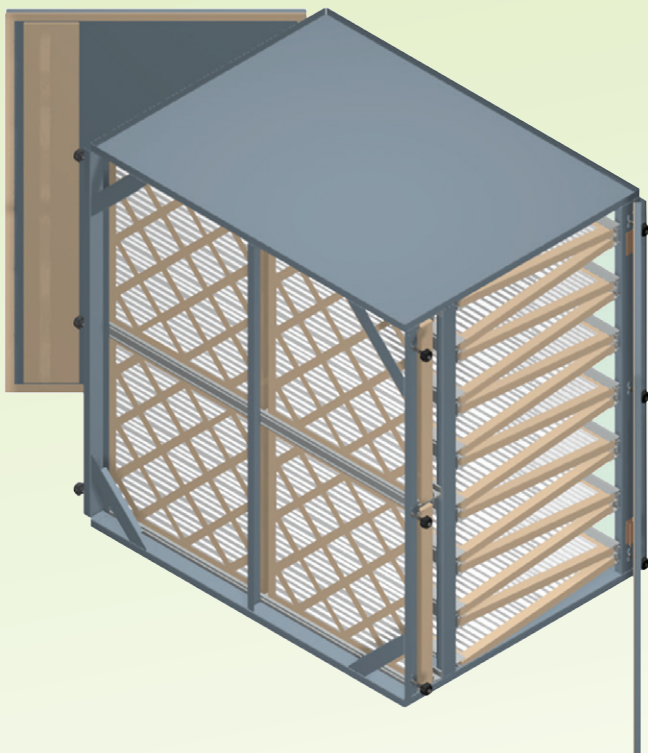
Standard Filter Housing Unit Model SFHU

2 STAGES OF FILTRATION PRE-FILTER/FINAL FILTER

SIZE: Three depths will accommodate final filters up to 36".

CONSTRUCTION: 16 ga. galvanized steel with integrated 1" mounting flanges, turned outward, located on inlet and discharge.

FILTER TRACK: Type 6063 extruded aluminum with integral nylon pile seal.



Carbon Filter Housing Unit Model CFHU

2 STAGES OF FILTRATION PRE-FILTER/CARBON TRAYS

SIZE: Two depths will accommodate carbon panels/trays with pre-filters either 2" or 4".

CONSTRUCTION: 14 ga. galvanized steel with integrated 1" mounting flanges, turned outward, located on inlet and discharge.

FILTER TRACK:

PRE: Type 6063 extruded aluminum with integral nylon fiber pile seal.

CARBON: Type 6063 extruded aluminum to accommodate 3/4" deep carbon panels/trays.

OPTIONS:

- 304SS construction.
- 316SS construction.
- Type 5052 aluminum construction.
- Insulated housing.
- Double wall insulated door.
- High temperature construction.
- +/- high pressure construction.
- Custom housing sizes.
- Custom mounting flange sizes (flanges turned outward or inward).
- Weatherproof construction.
- Epoxy coatings.

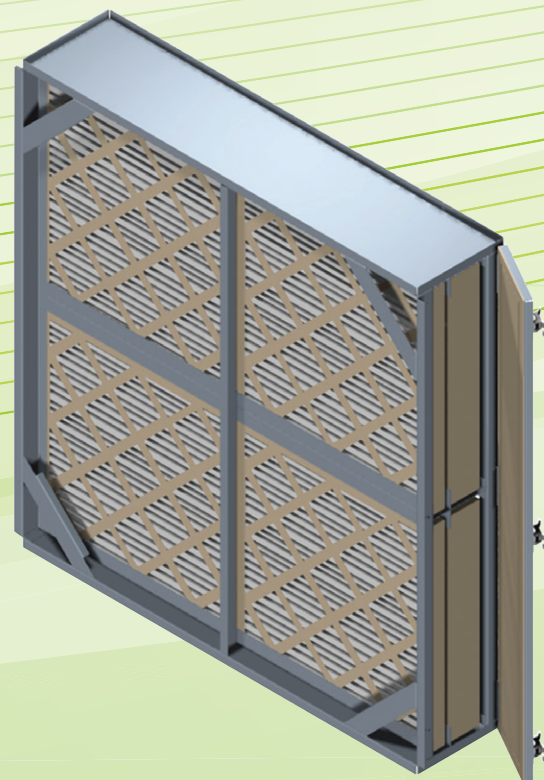
Double Flat Filter Housing Unit Model DFFU

2 STAGES OF FILTRATION PRE-FILTER/FINAL FILTER

SIZE: Two depths will accommodate pre-filters either 2" or 4" deep, all final filters are 4".

CONSTRUCTION: 16 ga. galvanized steel with integrated 1" mounting flanges, turned outward, located on inlet and discharge.

FILTER TRACK: 20 ga. galvanized steel formed filter track.



KLEAN AIRE

1902 Rankin Road, Houston, TX 77073 • 281-590-1172

Website: thermal-corp.com/products/klean-aire-products

Email: KleanAire@Nailor.com

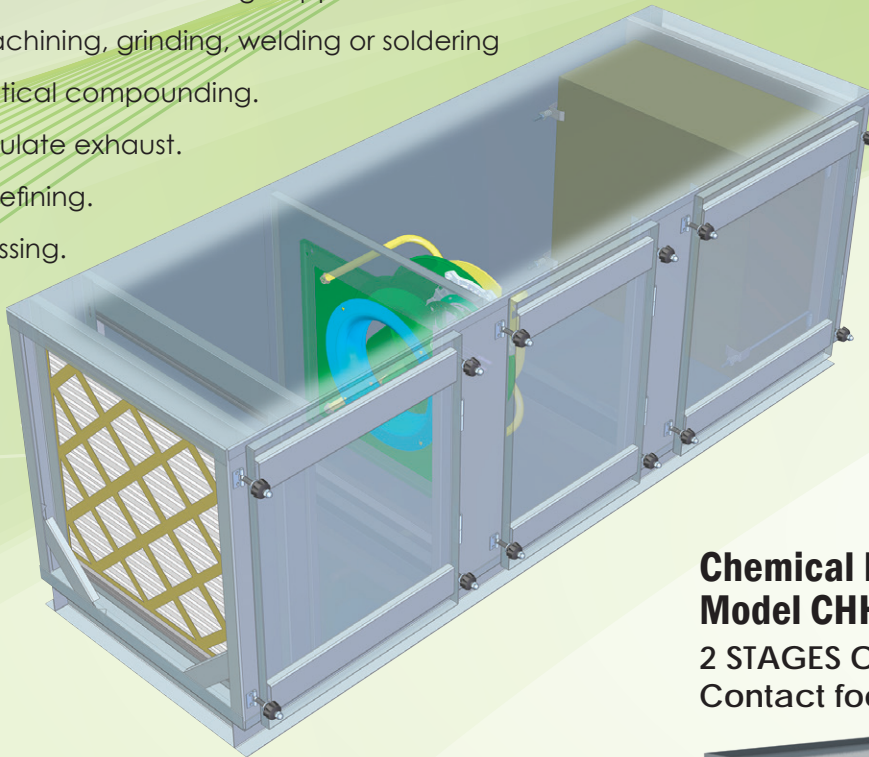
Fan Pack Housing Unit Model FPHU

SINGLE TO MULTISTAGE FILTRATION FAN SECTION/SIDE ACCESS

GENERAL: Klean Aire Fan Pack's are fully self-contained, industrial grade air cleaning systems, designed for control of particulate, gas-phase and bioaerosol contaminants (or any combination) from process or ambient air.

APPLICATIONS: Klean Aire Fan Pack Housing Units are available in many different multistage filtration configurations to solve a large variety of air contamination issues. They are used to remove nuisance or hazardous airborne contaminants in applications ranging from laboratory environments to manufacturing plants, including:

- General warehouse and storage applications.
- Material machining, grinding, welding or soldering
- Pharmaceutical compounding.
- Oil or particulate exhaust.
- Chemical Refining.
- Food Processing.

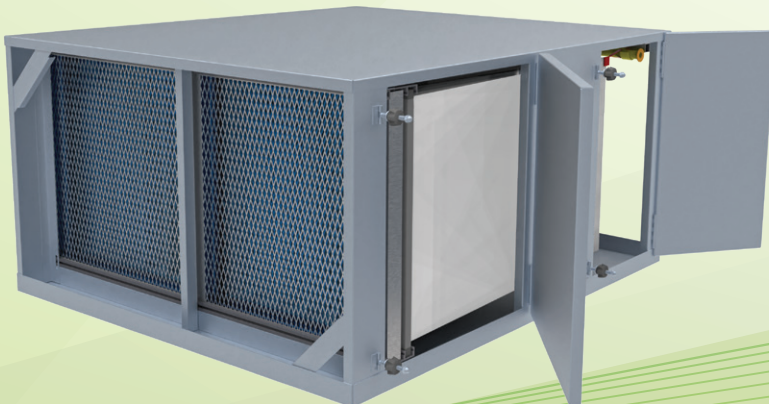


OPTIONS:

- Single or double wall insulation.
- Epoxy coatings.
- Exterior seam welding.
- Hang bases.
- Aluminum or stainless construction.
- 14 ga. galvanized steel housing.
- Inlet and exhaust plenums.
- TEFC or explosion proof motor/blower.
- Fans, DWDI Plenum, Direct Drive, Belt Drive and Fan with EC Motors.
- Weatherproof.
- High Temperature construction.

Mist Collector Model MCHU

2 STAGES OF FILTRATION Contact foctory for details.



Chemical Media Model CHHU

2 STAGES OF FILTRATION Contact foctory for details.



KLEAN AIRE HAS A VARIETY OF HOUSINGS TO OFFER:

STANDARD HOUSINGS for Bag Filters and High Efficiency Rigid Filters.

HEPA HOUSINGS with Crank-Lock Hepa Locking Assemblies.

HEPA HOUSINGS with Bolt-Lock Hepa Locking Assemblies.

CARBON HOUSINGS for Standard Carbon Tray Arrangement.

FLAT HOUSINGS for 2" or 4" Pleated Filters.

DOUBLE FLAT HOUSINGS for a Combination of 2" and 4" Pleats.

VEE BANK HOUSINGS for 2" or 4" Pleated Filters.

SPECIAL FLANGED HOUSING TO MATE TO AIR HANDLERS:

FILTER FAN UNITS

CHEMICAL MEDIA "BULK-FILL SCRUBBERS"

CHEMICAL MEDIA "RECIRCULATION UNITS"

CHEMICAL MEDIA "SIDE ACCESS HOUSINGS"

HEPA GRID ASSEMBLIES (NON-CEILING)

CUSTOM TRACK ASSEMBLIES

DIFFUSER SECTION UNITS

KLEAN AIRE CAN ALSO CUSTOM MANUFACTURE FILTER HOUSINGS TO YOUR SPECIFICATION, INCLUDING THE FOLLOWING OPTIONS AND FEATURES:

MIXING BOXES

OIL MIST UNITS

SEAM WELDED UNITS

VERTICAL FLOW UNITS

HIGH PRESSURE UNITS

HIGH TEMPERATURE UNITS

DOUBLE WALL INSULATED UNITS

DOUBLE WALL INSULATED DOORS ONLY

ALUMINUM CONSTRUCTION

STAINLESS STEEL CONSTRUCTION

EPOXY COATINGS

PERFORATED INNER LINERS

TEST PORTS

BOTTOM OR TOP ACCESS

MOUNTED GAGES AND/OR TAPS

STAINLESS STEEL HARDWARE

TRANSITIONS

WEATHERHOOD

We can generate submittals for any housing

Quick Ship Programs – Available

1 Week – 40% Add 2 Week – 25% Add 3 Week – 15% Add

Consult factory for availability.

Klean Aire is ready to meet your custom fabrication needs. If you have a filtration project question, need to request a quote or are looking for industry expertise, do not hesitate to call or email.



KLEAN AIRE

1902 Rankin Road, Houston, TX 77073 • 281-590-1172

Website: thermal-corp.com/products/klean-aire-products

Email: KleanAire@Nailor.com