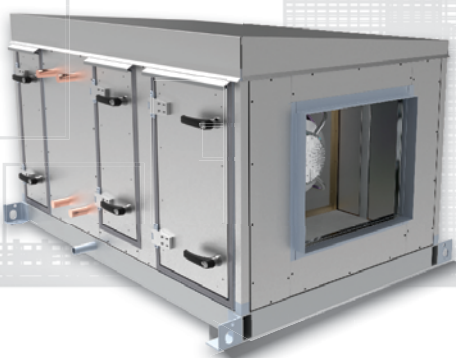


THERMAL CORPORATION

A Division of Nailor International Inc.

CUSTOM AIR HANDLERS

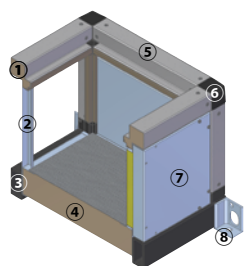
TAILORED HVAC SOLUTIONS FOR EVERY APPLICATION



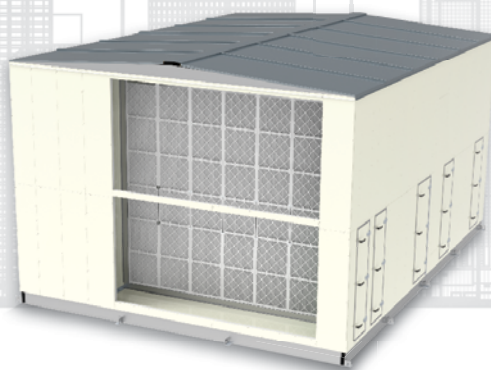
F SERIES

Formed Frame

Structural Steel Tubing Base
Drain Pan Recessed in Floor
Screwed Formed Sheet Frame
Indoor or Outdoor
Knock-down Capable
Fiberglass and/or Foam Panels



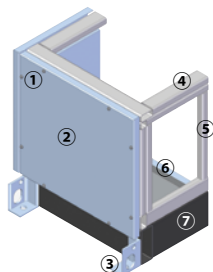
- ① Foam Insulation
- ② Intermediate Post
- ③ Base Rail
- ④ Foam Insulated Floor
- ⑤ Formed Sheet Metal Post
- ⑥ Modular Corner
- ⑦ Panel Assembly
- ⑧ Anchor/Lifting Lug



T SERIES

Tubular Frame

Structural Steel Tubing Base
Drain Pan Recessed in Floor
Welded Structural Tubing
Indoor or Outdoor
Available in Shipping Splits
Fiberglass and/or Foam Panels



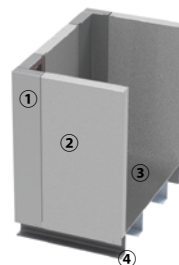
- ① Fastener
- ② Formed Sheet Metal Panel
- ③ Anchor/Lifting Lug
- ④ Structural Steel Tube Roof Structure
- ⑤ Structural Steel Tube Post
- ⑥ Heavy Gauge Formed Sheet Metal Base Cross Members
- ⑦ Structural Steel Tube Base Channel



D SERIES

Panel on Panel

Structural C Channel Base
Drain Pan Recessed in Floor
Frameless Screwed Panel
Indoor or Outdoor
Available in Shipping Splits
Fiberglass, Mineral Wool (USCGA) Panels



- ① Corner Panel Assembly
- ② Wall Panel
- ③ Floor Assembly
- ④ Base

BUILT TO PERFORM. DESIGNED FOR THERMAL COMFORT.



80 YEARS
IN BUSINESS



CUSTOM
SOLUTIONS



ENERGY
EFFICIENT



FLEXIBLE
DESIGN



QUALITY
MATERIALS &
COMPONENTS

THERMAL CORPORATION

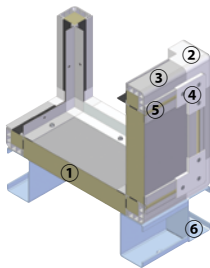
A Division of Nailor International Inc.

THERMAL AIR HANDLERS FOR THERMAL COMFORT



TS SERIES

True Thermal Break
Formed Channel Base
Drain Pan Above Floor
Extruded Aluminum Frame
Indoor
Knock-Down Capable
Polyurethane Foam Panels

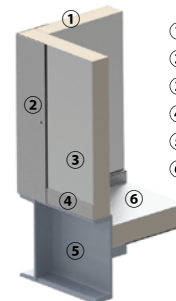


- ① Polyurethane Injected Foam Panel
- ② 3-way Corner Piece
- ③ Extruded Aluminum Post with Integral Thermal Break
- ④ Cosmetic Cover
- ⑤ Cosmetic Extrusion
- ⑥ Base



TSX SERIES

True Thermal Break, Excluding Frame
Structural C Channel Base
Drain Pan Above Floor, Recessed Optional
Frameless Lagged Panels
Indoor, Outdoor Optional
Polyurethane Foam Panels



- ① Foam Insulation
- ② Corner Panel Assembly
- ③ Wall Panel
- ④ Base Retainer Structure
- ⑤ Structural C Channel
- ⑥ Floor Assembly



thermal-corp.com

WTAHU 9.5 2025